

# T&T

## Stock Ranges Edition 5



Tassel & Trim is a division of Trimmings by Design Ltd. Gresham Road, Derby, DE24 8AW  
Tel. 01332 331314  
[sales@tasselandtrim.co.uk](mailto:sales@tasselandtrim.co.uk)

# *A World of Trimming*

- ◆ *Beaded Trimmings of Glass and Acrylic*
  - ◆ *Braids and Gimp Braids*
    - ◆ *Bullion Fringes*
  - ◆ *Cords and Flanged Cords*
- ◆ *Fringes, Cut Fringes, Looped Fringes*
  - ◆ *Key Tassels*
  - ◆ *Ruche for Cushions*
    - ◆ *Tassel Fringes*
    - ◆ *Tiebacks*
  - ◆ *Pom - Pom Fringes*

# Trimming Recommendations

## Size and colour and quality variation

The dimensions and depths quoted on the pages are approximate and can vary according to depth of colour used or the structure: individually produced items such as Tiebacks and Tassels are also subject to slight variation.

Every effort is made to avoid variation from batch to batch. Several of our products are made from handmade glass beads, and also acrylic beads which are therefore subject to variation in size, colour and finish.

The same applies to items made from natural fibres such as cotton, jute, and linen.

It is recommended all the Trimming for a project or a manufacture of a product should be checked before use.

Claims cannot be entertained for such a variation when the items have been utilised.

In all instances, we recommend that colour is matched using sample cards or folders and not the printed pages. The printed catalogue should be used as a guide only.

Every effort is made to keep within reasonable tolerances.

## Wash Care Instructions

Trimmings are of delicate construction and we recommend that they should be dry cleaned only, with an absolute minimum of agitation.

The products are dyed to a good standard of light fastness but are not recommended for washing.

Items with Sequins, Metallic or Lurex yarns may be suitable for dry cleaning subject to the correct solvents being used we would suggest discussion with your dry cleaner before commencement at your own risk.

Tiebacks, Tassels, Beaded Trimmings and Tassel fringes are assembled by hand, they are decorative product and need delicate handling, we would not recommend them for dry cleaning or being immersed in water.

However, Tiebacks and Tassels often benefit after unpacking with a slight steam treatment either over a kettle or gentle fabric steamer on a low setting.





# Bead Connections



N.B. Trims are shown smaller than actual size. Colour representation and given sizes are approximate.

# T&T

## Bejewelled II



N.B. Trims are shown smaller than actual size. Colour representation and given sizes are approximate.

# T&T

## Bejewelled II



N.B. Trims are shown smaller than actual size. Colour representation and given sizes are approximate.



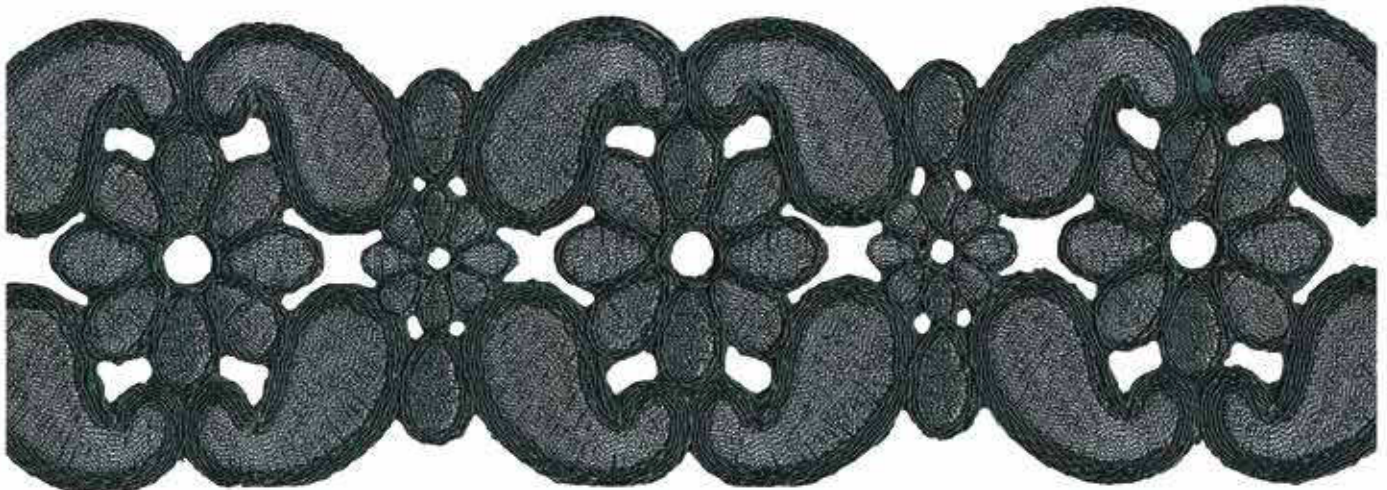
T&T

*Brocade Collection*

MW11684/ANTIQUÉ GOLD 100mm Embroidered Braid



MW11684/ANTIQUÉ BLACK 100mm Embroidered Braid



N.B. Trims are shown smaller than actual size. Colour representation and given sizes are approximate.



# T&T

# Burlington

MW11433 70mm Woven Braid

M100 Red



## Colourways

M602 Linen



M300 Gold



M500 Aqua



M600 Silver



M400 Leaf



M601 Grey



M603 Grape



N.B. Trims are shown smaller than actual size. Colour representation and given sizes are approximate.



# T&T

# Burlington

MW11581 70mm Woven Braid

M100 Red



## Colourways

M602 Linen



M300 Gold



M500 Aqua



M600 Silver



M400 Leaf



M601 Grey



M603 Grape



N.B. Trims are shown smaller than actual size. Colour representation and given sizes are approximate.



# T&T

## *Burlington Tassel Tiebacks*



MT11582 M100  
32cm Tassel  
90cm Embrace



M602 Linen



M300 Gold



M500 Aqua



M600 Silver



M400 Leaf



M601 Grey



M603 Grape

N.B. Trims are shown smaller than actual size. Colour representation and given sizes are approximate.



# T&T

# Carnival

MK10022

MW10678



N.B. Trims are shown smaller than actual size. Colour representation and given sizes are approximate.



# T&T

# Carnival

MK11069

826 Grey



002 White

712 Natural

710 Mocha



306 Red

314 Fuchsia

404 Purple



665 Lime

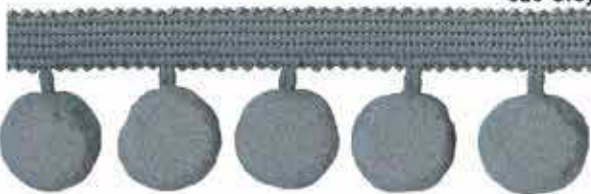
517 Teal

900 Black



MK11691

826 Grey



002 White

712 Natural

105 Amber



314 Fuchsia

323 Claret

517 Teal



710 Mocha

900 Black



MK10371

MK10371/M400 Lime



MK10371/M600 Natural

MK10371/M601 Linen



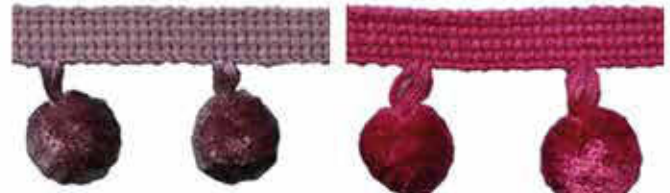
MK10371/M300 Gold

MK10371/M500 Aqua



MK10371/M501 Mauve

MK10371/M101 Fuchsia



MK10371/M201 Black

MK10371/M100 Red



MK10371/M602 Multi



N.B. Trims are shown smaller than actual size. Colour representation and given sizes are approximate.

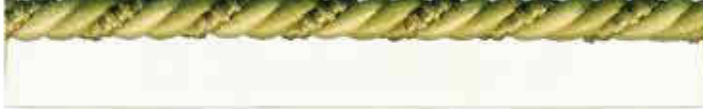


# T&T Colour Accents

MC11274 7mm Cord 16 Citrus



FC11275 7mm Flanged Cord 16 Citrus



MK11276 15mm Braid 16 Citrus



MK11279 80mm Bullion Fringe 16 Citrus



MK11278 80mm Tassel Fringe 16 Citrus



MK11277 35mm Pom-Pom Fringe 16 Citrus



## Colourways



01 Pearl

11 Cream

02 Warm Gold

12 Antique Gold

31 Linen

08 Jute

04 Ruby

15 Terracotta

05 Tango

09 Damson

06 Lime

07 Duck Egg

27 Azure

17 Indigo

03 Silver Grey

23 Black

N.B. Trims are shown smaller than actual size. Colour representation and given sizes are approximate.



# T&T

# Colour Accents

# Tiebacks



**MT11282 / 16 Citrus**  
Large Tassel Tieback  
Tassel Length = 28cm  
Embrace = 90cm

**MT11285 / 16 Citrus**  
Small Tassel Tieback  
Tassel Length = 17cm  
Embrace = 75cm



**MT11280 / 16 Citrus**  
Large Rope Tieback  
Embrace = 90cm

**MT11281 / 16 Citrus**  
Small Rope Tieback  
Embrace = 70cm

**The Tassel and Rope Tiebacks are available in all 17 colourways**

N.B. Trims are shown smaller than actual size. Colour representation and given sizes are approximate.



# T&T

# Cumbræ

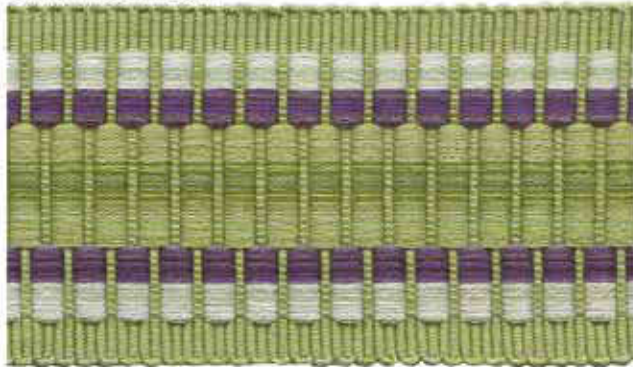
MK11569/06 Bramble  
12mm Gimp Braid



MW11570/06 Bramble  
15mm Woven Braid



MW11571/06 Bramble  
50mm Woven Braid



MK11568/06 Bramble  
25mm Cut Ruche



MB115567FL/06 Bramble  
8mm Flanged Cord



MB11566/06 Bramble  
8mm Cord



MW11573/06 Bramble  
35mm Ball Trim



MW11572/06 Bramble  
38mm Pom-Pom Trim



MB11402/02 Biscuit  
8mm Faux Leather Braid



MB11402/03 Grey  
8mm Faux Leather Braid



MB11402/08 Taupe  
8mm Faux Leather Braid



MFC11403/02 Biscuit  
8mm Flanged Cord



MFC11403/03 Grey  
8mm Flanged Cord



MFC11403/08 Taupe  
8mm Flanged Cord



N.B. Colour representation and given sizes are approximate.



# T&T

# Cumbræ

## Colourways

MB11566/01

01 Natural



MW11573/01



MB11566/02

02 Gold



MW11573/02



MB11566/09

09 Thistle



MW11573/09



MB11566/06

06 Bramble



MW11573/06

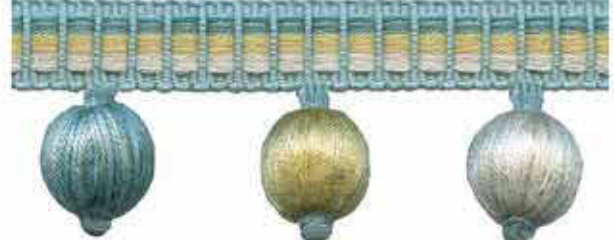


MB11566/08

08 Aqua



MW11573/08



MB11566/03

03 Charcoal



MW11573/03



MB11566/07

07 Blueberry



MW11573/07



MB11566/04

04 Ruby



MW11573/04



N.B. Trims are shown smaller than actual size. Colour representation and given sizes are approximate.



# T&T

# Cumbræ

Plaited Rope Tieback - MT11575  
Embrace Length = 80cm



06 Bramble



01 Natural



08 Aqua



02 Gold



03 Charcoal



07 Blueberry



09 Thistle



04 Ruby

Tassel - MT11576

Tassel = 9cm  
Loop = 9cm



01 Natural



08 Aqua



02 Gold



06 Bramble



03 Charcoal



07 Blueberry



09 Thistle



04 Ruby

N.B. Colour representation and given sizes are approximate.

# T&T

# Cumbræ



**MT11574/06 Bramble**  
Small Tassel Tieback  
Tassel Length = 27cm  
Embrace Length = 85cm



**MT11707/06 Bramble**  
Large Tassel Tieback  
Tassel Length = 39cm  
Embrace Length = 90cm



01  
Natural



08  
Aqua



02  
Gold



06  
Bramble



03  
Charcoal



07  
Blueberry



09  
Thistle



04  
Ruby

N.B. Colour representation and given sizes are approximate.





# Durham Collection



## Colourways



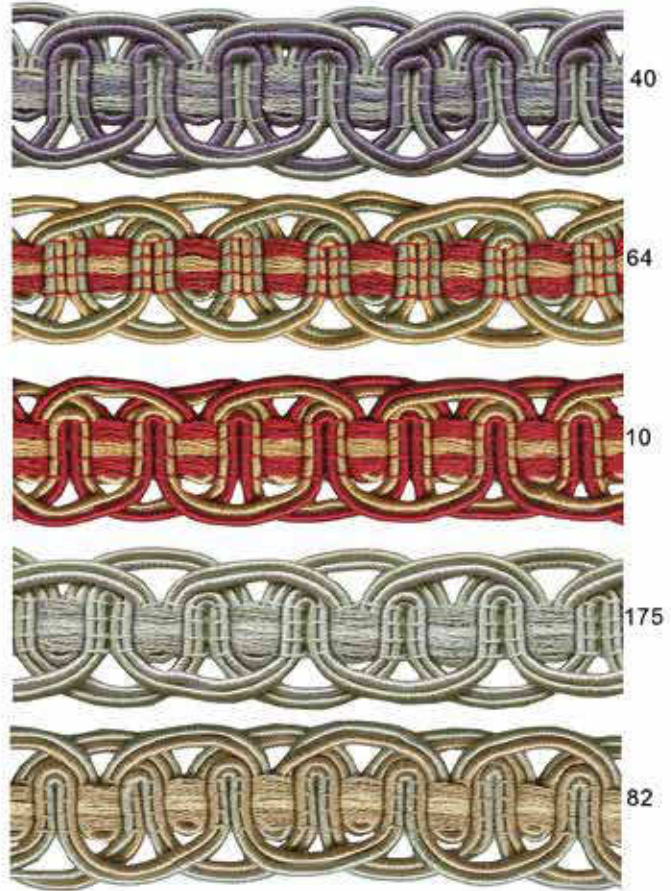
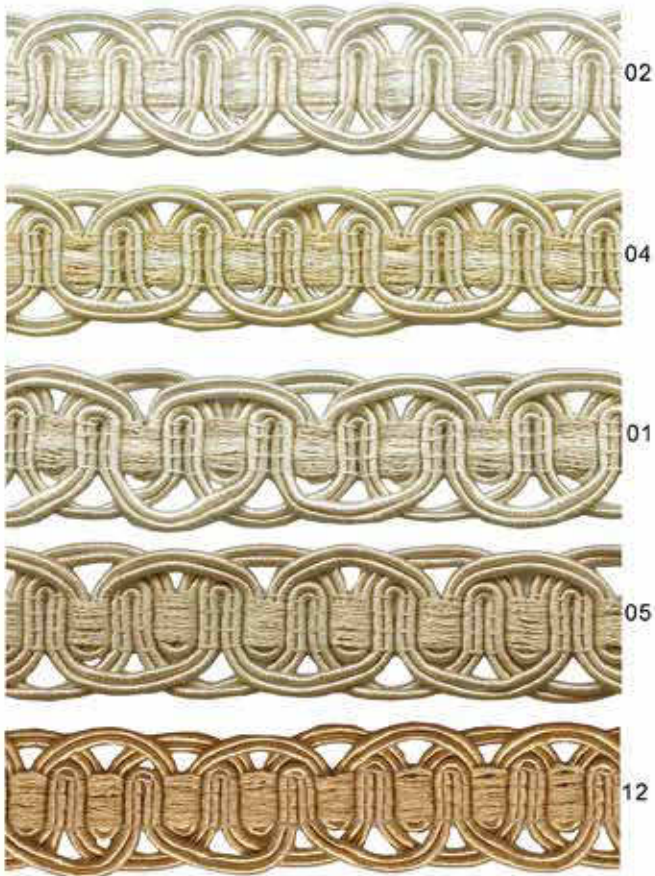
N.B. Trims are shown smaller than actual size. Colour representation and given sizes are approximate.



# T&T

# Elegance

B16 (22mm)



Nat/Black

MK9980 (12mm)



Ivory



Gold



Linen



Denim



Duck Egg



Green



Red



Rust



Chocolate



Platinum



N.B. Trims are shown approximately actual size. Colour representation and given sizes are approximate.



# T&T

# Elegance

G17 (14mm)



01



M402



75



03



32



155



M603



139



52



M201



M103



M501



101



34



53



105



M502



152



04



133



141



M300



190



M200



110



160



M602



M203



M401



171



193



67



70



06



07

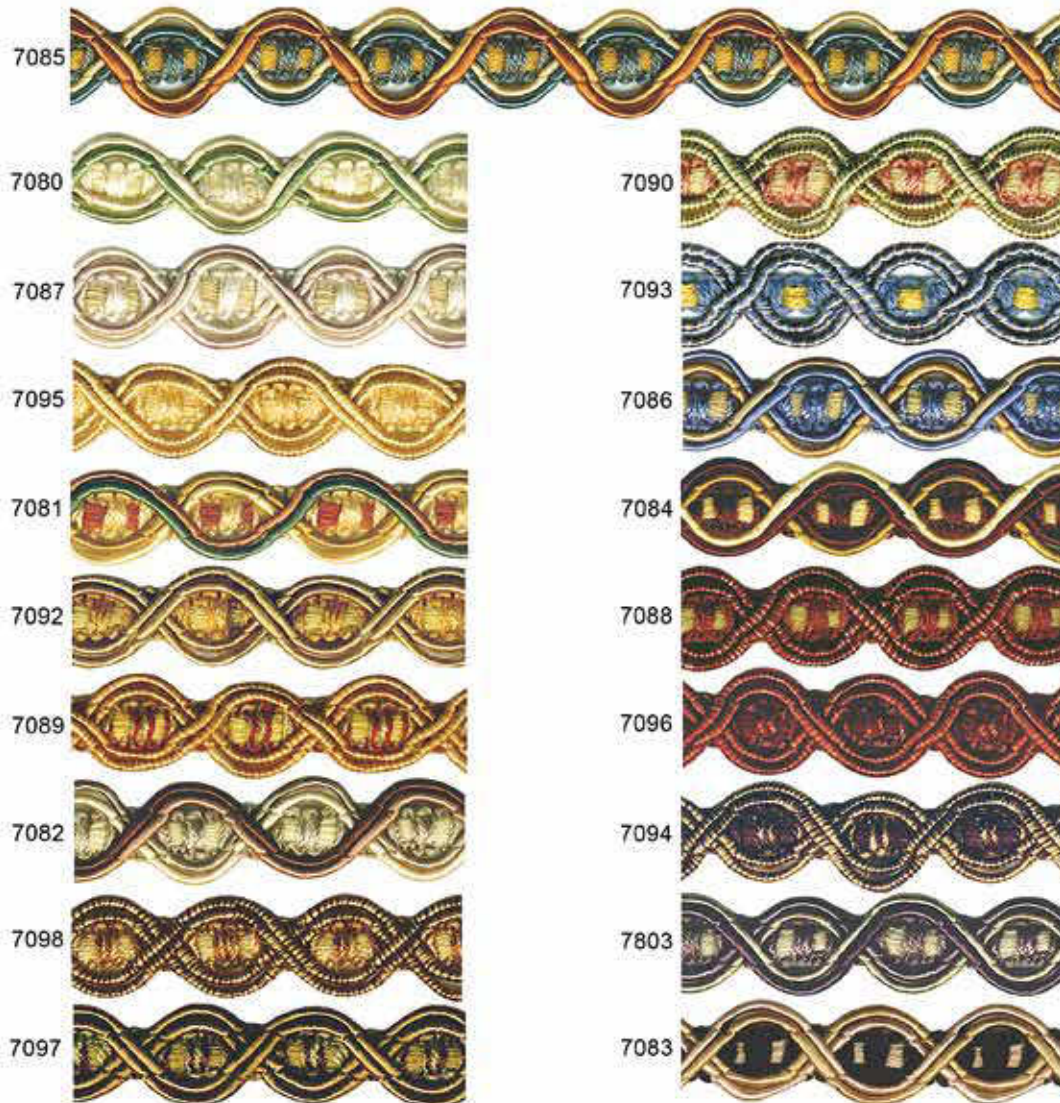
N.B. Trims are shown approximately actual size. Colour representation and given sizes are approximate.



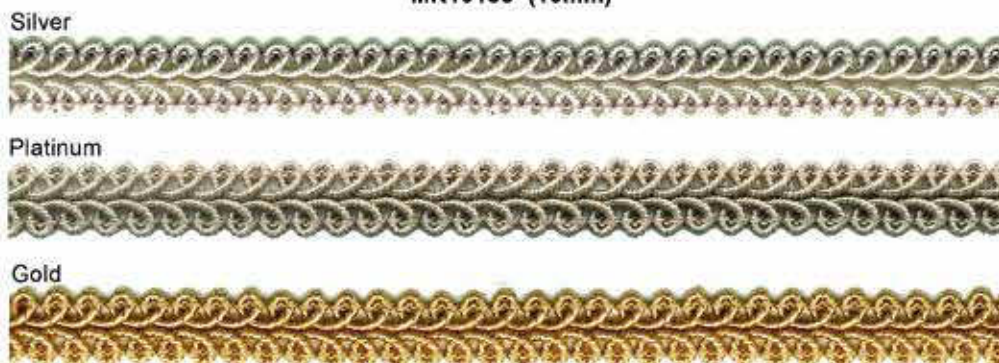
# T&T

# Elegance

G14 (14mm)



MK10133 (10mm)



N.B. Trims are shown approximately actual size. Colour representation and given sizes are approximate.



T&T

# Elegance

MK11845 (14mm)

M601 Cream



M602 Mink



M400 Teal



M100 Red



M500 Purple



M600 Grey



N.B. Trims are shown approximately actual size. Colour representation and given sizes are approximate.

# T&T

# Elements



MT11546/01 Pearl  
27cm Tassel 80cm Embrace

MB11542/01 Pearl



MB11542FL/01 Pearl



MK11543/01 Pearl



MK11544/01 Pearl



MK11545/01 Pearl



MK11543/02 Gold



MK11543/03 Platinum



MK11543/04 Rose Gold



MK11543/05 Pewter



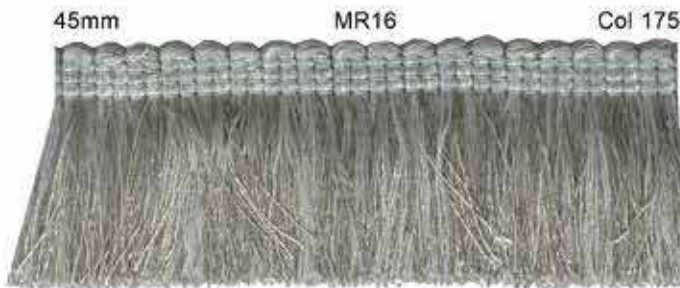
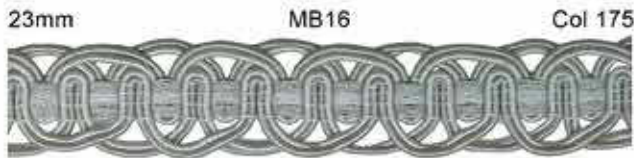
N.B. Tieback is shown smaller than actual size. Colour representation and given sizes are approximate



# T & T

# Emilie Collection

## Colourways



N.B. Trims are shown smaller than actual size. Colour representation and given sizes are approximate

# T&T

# Emilie Tiebacks & Tassels

MTBA-17  
Col 175  
Tassel = 31cm  
Embrace = 95cm



MTBA-16  
Col 175  
Tassel = 27cm  
Embrace = 95cm



MSTA-16  
Col 175  
Tassel = 14cm  
Loop = 10cm



MSTA-17  
Col 175  
Tassel = 10cm  
Loop = 6cm

## Colourways



Col 01



Col 02



Col 04



Col 05



Col 10



Col 12



Col 40



Col 64



Col 82

N.B. Tassels and Tiebacks are shown smaller than actual size. Colour representation and given sizes are approximate



# T&T

# Leoni

MW11188/M100 Ruby 15mm Narrow Braid



MB11186/M100 Ruby 10mm Cord



MW11189/M100 Ruby 30mm Wide Braid



MB11187/FL/M100 Ruby 10mm Flanged Cord



MW11190/M100 Ruby 51mm Bead Fringe



MW11192/M100 Ruby 40mm Pom-Pom Fringe



MW11205/M100 Ruby 40mm Pleated Ruche



MK11193/M100 Ruby 63mm Tassel Fringe



## Colourways

M600 Cream



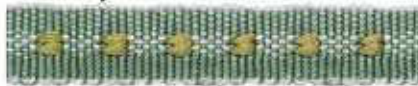
M200 Mink



M300 Gold



M400 Thyme



M502 Turquoise



M501 Heather



M401 Tutti-Fruitti



M500 Denim



M601 Platinum



N.B. Trims are shown smaller than actual size. Colour representation and given sizes are approximate.



# T&T

# Leoni



MW11205/M600 Cream



MW11205/M200 Mink



MW11205/M300 Gold



MW11205/M400 Thyme



MW11205/M502 Turquoise



MW11205/M501 Heather



MW11205/M401 Tutti-Fruitti



MW11205/M500 Denim



MW11205/M601 Platinum



MK11193/M600 Cream



MK11193/M200 Mink



MK11193/M300 Gold



MK11193/M400 Thyme



MK11193/M502 Turquoise



MK11193/M501 Heather



MK11193/M401 Tutti-Fruitti



MK11193/M500 Denim



MK11193/M601 Platinum

N.B. Trims are shown smaller than actual size. Colour representation and given sizes are approximate.



# T&T *Leoni Tassels*

Tassel Length = 32cm  
Embrace = 90cm



MT11206/M100 Ruby

Tassel Length = 9cm  
Loop Length = 9cm



MT11207/M100 Ruby



M600 Cream



M200 Mink



M300 Gold



M400 Thyme



M502 Turquoise



M501 Heather



M401 Tutti-Fruitti



M500 Denim



M601 Platinum

N.B. Tiebacks are shown smaller than actual size. Colour representation and given sizes are approximate.



# T&T

# Matisse

MT10675/20 Mocha 18mm Button Braid



MW10676/20 Mocha 32mm Button Braid



LIMITED STOCK of some colourways

MW10677/20 Mocha 42mm Flocked Ball



MW10678/20 Mocha 40mm Pom-Pom Fringe



MK10679/20 Mocha 36mm Ruche



MB10673/20 Mocha 8mm Braided Cord



MB10674FL/20 8mm Flanged Braided Cord



MT10675/04 Pearl



MT10675/05 Soft Gold



MW10677/04



MW10677/05



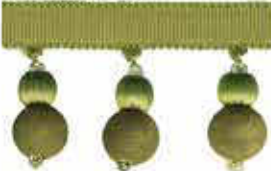
MT10675/10 Laurel



MT10675/11 Duck Egg



MW10677/10



MW10677/11



MT10675/19 Peacock



MT10675/14 Fuchsia



MW10677/19



MW10677/14



MT10675/18 Damson



MT10675/08 Brick Red



MW10677/18



MW10677/08



MT10675/07 Black



MT10675/06 Chocolate



MW10677/07



MW10677/06



N.B. Trims are shown smaller than actual size. Colour representation and given sizes are approximate.

# T&T Matisse Tiebacks



MT10681/20 Mocha  
Tassel Tieback  
Tassel Length = 27cm  
Embrace = 95cm



MT10680/20 Mocha  
Rope Tieback  
Embrace = 60cm

## Colourways

04 Pearl



20 Mocha



05 Soft Gold



10 Laurel



11 Duck Egg



19 Peacock



18 Damson



08 Brick Red



14 Fuchsia



06 Chocolate



07 Black



N.B. Tiebacks are shown smaller than actual size. Colour representation and given sizes are approximate.



# T&T Natural Collection

B241 15mm Braid



B242 25mm Braid



C241 9mm Cord



FC241 9mm Flanged Cord



R241 40mm Cut Ruche



TF241 60mm Tassel Fringe



BF241/7.5 75mm Bullion Fringe



FF241 40mm Fan Edge



## Colourways

Natural



Cotton/Linen



Linen



Jute



N.B. Tiebacks are shown smaller than actual size. Colour representation and given sizes are approximate

# T&T Natural Collection



N.B. Tiebacks are shown smaller than actual size. Colour representation and given sizes are approximate





# Tanzania Collection

MW10460 M602 35mm Bead Fringe



MW10461 M602 28mm Bead Fringe



MW10460 & MW10461 are available in the following colourways



MW10464 M600 20mm



MW10469 M600 24mm



MW10468 M600 26mm



N.B. Trims are shown smaller than actual size. Colour representation and given sizes are approximate.

# T&T Tanzania Collection

## 20mm Bead Trim MW10462



## 32mm Bead Trim MW10467



N.B. Trims are shown smaller than actual size. Colour representation and given sizes are approximate.





# Tassel Fringe

MW11681/GREY 42mm Tassel Fringe



N.B. Colour representation and given sizes are approximate.

# T&T

# Uccello

MB11072/Col 08 6.5mm Ribbon Braided Cord



MB11073/Col 08 6.5mm Flanged Braided Cord



MW11074/Col 08 18mm Gimp Picot Braid



MW11076/Col 08 45mm Ball Fringe



MK11077/Col 08 45mm Looped Ribbon Ruche



MW11075/Col 08 55mm Bound Tassel Fringe



Colourway - Platinum

## Colourways

MB11072/01 Pearl



MB11072/02 Soft Gold



MB11072/07 Duck Egg



MB11072/03 Silver Grey



MW11076/01 Pearl



MW11076/02 Soft Gold



MW11076/07 Duck Egg



MW11076/03 Silver Grey



MB11072/06 Lime Green



MB11072/04 Coral



MB11072/19 Mauve



MB11072/17 Indigo



MW11076/06 Lime Green



MW11076/04 Coral



MW11076/19 Mauve



MW11076/17 Indigo



N.B. Trims are shown smaller than actual size. Colour representation and given sizes are approximate.



# T&T

## Uccello Tassel Tieback

Tassel Length = 32cm  
Embrace = 90cm



MT11078/Col 08  
Platinum



MT11078/Col 01  
Pearl



MT11078/Col 02  
Soft Gold



MT11078/Col 03  
Silver Grey



MT11078/Col 07  
Duck Egg



MT11078/Col 06  
Lime Green



MT11078/Col 17  
Indigo



MT11078/Col 04  
Coral



MT11078/Col 19  
Mauve

N.B. Tiebacks are shown smaller than actual size. Colour representation and given sizes are approximate.



# T&T

# Verano

Performance Collection

**bella**  
**dura**<sup>®</sup>  
PERFORMANCE BY DESIGN

B11893FL/09 Harbour

4mm Cayo Flanged Cord



B11893FL/10 Marine

4mm Cayo Flanged Cord



B11894FL/09 Harbour

5.5mm Cape Town Flanged Cord



K11937/10 Marine

12mm Granger Gimp Braid



W11895/09 Harbour

52mm Sonoma Stripe Braid



K11897/09 Harbour

35mm Bora-Bora Ruche



K11897/10 Marine



W11927/09

70mm Bahia Braid



W11927/10 Marine



N.B. Colour representation and given sizes are approximate.



# T&T

# Verano

Performance Collection

**bella**  
**dura**<sup>®</sup>  
PERFORMANCE BY DESIGN

B11894FL/08 Guava 5.5mm Cape Town Cord



B11893FL/08 Guava 4mm Cayo Cord



K11937/08 Guava 12mm Granger Braid



K11897/08 Guava 35mm Bora Bora Ruche



W11927/08 Guava 70mm Bahia Braid



W11895/08 Guava 52mm Sonoma Braid



K11937/04 Fossil 12mm Granger Braid



B11893FL/03 Mineral 4mm Cayo Cord



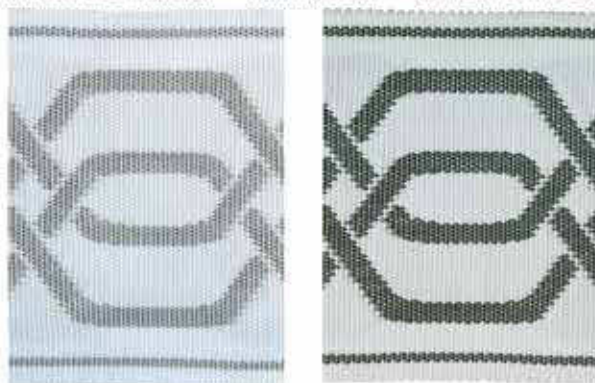
K11897/03 Mineral 35mm Ruche K11897/04 Fossil



B11893FL/04 Fossil 4mm Cayo Cord



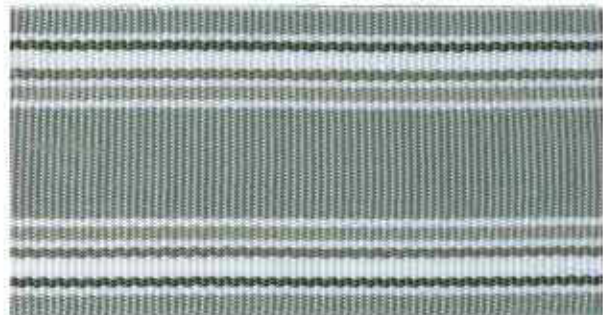
W11927/03 Mineral 70mm Braid W11927/04 Fossil



B11894FL/03 Mineral 5.5mm Cape Town Cord



W11895/03 Mineral 52mm Sonoma Braid



N.B. Trimmings are shown smaller than actual size. Colour representation and given sizes are approximate.



# T&T

# Verano

Performance Collection

**bella**  
**dura**<sup>®</sup>  
PERFORMANCE BY DESIGN

B11894FL/05 Seaglass 5.5mm Cape Town Cord



B11893FL/05 Seaglass 4mm Cayo Cord



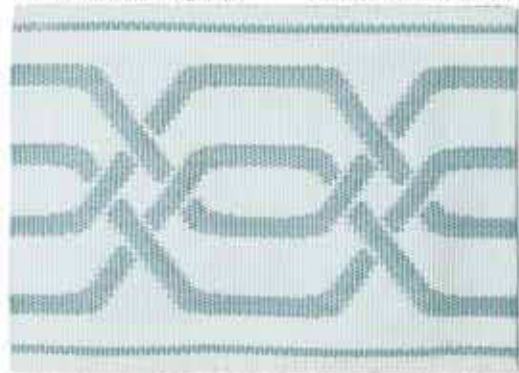
K11897/05 Seaglass 35mm Bora Bora Ruche



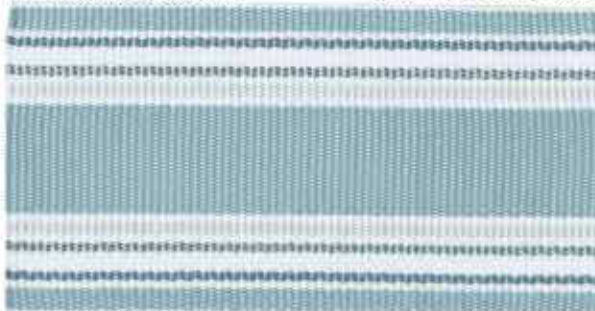
K11937/05 Seaglass 12mm Granger Braid



W11927/05 Seaglass 70mm Bahia Braid



W11895/05 Seaglass 52mm Sonoma Braid



B11893FL/06 Coral 4mm Cayo Cord



B11894FL/06 Coral 5.5mm Cape Town Cord



K11937/06 Coral 12mm Granger Braid



K11897/06 Coral 35mm Bora Bora Ruche



W11927/06 Coral 70mm Bahia Braid



W11895/06 Coral 52mm Sonoma Braid



N.B. Trimmings are shown smaller than actual size. Colour representation and given sizes are approximate.



# T&T

# Verano

Performance Collection

**bella**  
**dura**<sup>®</sup>  
PERFORMANCE BY DESIGN

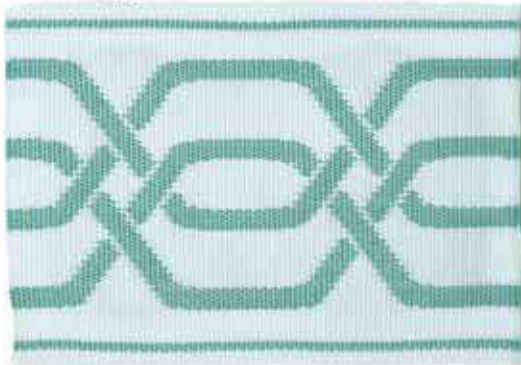
B11894FL/07 Lagoon 5.5mm Cape Town Cord



K11937/07 Lagoon 12mm Granger Braid



W11927/07 Lagoon 70mm Bahia Braid



B11893FL/07 Lagoon 4mm Cayo Cord



K11897/07 Lagoon 35mm Bora Bora Ruche



W11895/07 Lagoon 52mm Sonoma Braid



K11937/01 Canvas 12mm Granger Braid



K11897/01 Canvas 35mm Ruche K11897/02 Pebble



B11893FL/01 Canvas 4mm Cayo Cord



B11893FL/02 Pebble 4mm Cayo Cord



B11894FL/01 Canvas 5.5mm Cape Town Cord



W11927/01 Canvas 70mm Braid W11927/02 Pebble



W11895/01 Canvas 52mm Sonoma Braid



N.B. Trimmings are shown smaller than actual size. Colour representation and given sizes are approximate.



# T&T

# Versailles

Colourway 11 Bisque

MC11973/11  
10mm Cord



MC11972FL/11  
10mm Flanged Cord



MW11982/11  
13mm Braid



MW11981/11  
50mm Trellis Cord Braid



MT11979/11  
85mm Tassel Fringe



MC11975/11  
6mm Cord



MC11974FL/11  
6mm Flanged Cord



MW11977/11  
20mm Woven Gimp Detail Braid



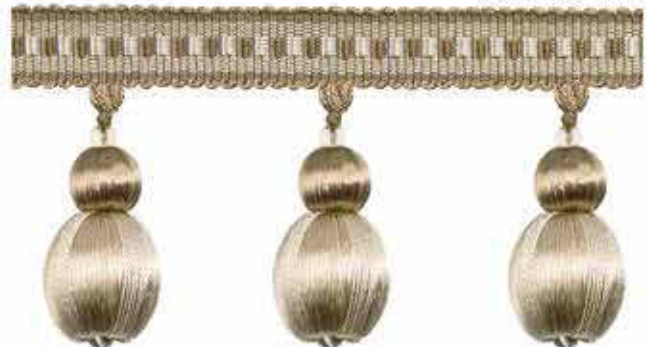
MK11980/11  
45mm Scroll Braid



MK11976/11  
40mm Ruche



MT11978/11  
60mm Ball Trim



N.B. Colour representation and given sizes are approximate.



# T&T

# Versailles

## Colourways

MC11973/01 01 Ivory 10mm Cord



MT11978/01 60mm Ball Trim



MC11973/02 02 Gold 10mm Cord



MT11978/02 60mm Ball Trim



MC11973/06 06 Olive 10mm Cord



MT11978/06 60mm Ball Trim



MC11973/09 09 Wisteria 10mm Cord



MT11978/09 60mm Ball Trim



MC11973/03 03 Silver 10mm Cord



MT11978/03 60mm Ball Trim



MC11973/07 07 Slate Blue 10mm Cord



MT11978/07 60mm Ball Trim



MC11973/04 04 Rouge 10mm Cord



MT11978/04 60mm Ball Trim



MC11973/19 19 Mulberry 10mm Cord



MT11978/19 60mm Ball Trim



N.B. Colour representation and given sizes are approximate.

**T&T**

*Versailles*



**MT11984/11 Bisque**  
**Double Tassel Tieback**  
 Tassel Length = 43cm  
 Embrace Length = 90cm



**MT11983/11 Bisque**  
**Key Tassel**  
 Tassel = 14.5cm  
 Loop = 10cm



**MT11985/11 Bisque**  
**Single Tassel Tieback**  
 Tassel Length = 43cm  
 Embrace Length = 90cm



**MT11986/11 Bisque**  
**Tieback Extender**  
 Length = 23cm



01 Ivory



03 Silver



07 Slate Blue



02 Gold



04 Rouge



06 Olive



09 Wisteria



19 Mulberry

N.B. Colour representation and given sizes are approximate.



# T&T

# Vivaldi

MC9979/ Gold

7mm Flanged Cord



MK9980/ Gold

12mm Gimp Trim



MK9981/ Gold

30mm Fan Edge



MK9982/ Gold

40mm Ball Trim



## COLOURWAYS

MK9981/ Ivory



MK9981/ Duck Egg



MK9981/ Linen



MK9981/ Green



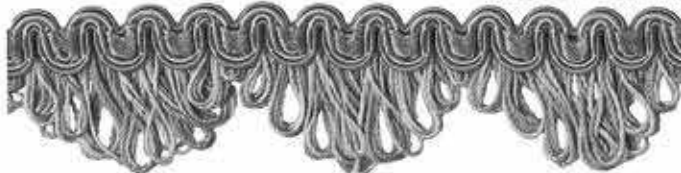
MK9981/ Nat/Black



MK9981/ Red



MK9981/ Platinum



MK9981/ Rust



MK9981/ Denim



MK9981/ Chocolate



N.B. Trims are shown smaller than actual size. Colour representation and given sizes are approximate.



# T&T

## Vivaldi Tassel Tieback

Tassel Length = 17cm  
Embrace Length = 75cm



MT9983/  
Gold



MT9983/  
Ivory



MT9983/  
Linen



MT9983/  
Navy/Black



MT9983/  
Platinum



MT9983/  
Denim



MT9983/  
Duck Egg



MT9983/  
Green



MT9983/  
Red



MT9983/  
Rust



MT9983/  
Chocolate

N.B. Tiebacks are shown smaller than actual size. Colour representation and given sizes are approximate.